
**UNITED STATES
SECURITIES AND EXCHANGE COMMISSION**
Washington, D.C. 20549
FORM 8-K
CURRENT REPORT

Pursuant to Section 13 or 15(d) of The Securities Exchange Act of 1934

Date of Report (Date of earliest event reported): May 12, 2026

PORTLAND GENERAL ELECTRIC COMPANY

(Exact name of registrant as specified in its charter)

Oregon	001-5532-99	93-0256820
(State or other jurisdiction of incorporation)	(Commission File Number)	(I.R.S. Employer Identification No.)

121 SW Salmon Street, Portland, Oregon 97204
(Address of principal executive offices, including zip code)

Registrant's telephone number, including area code: (503) 464-8000

Check the appropriate box below if the Form 8-K filing is intended to simultaneously satisfy the filing obligation of the registrant under any of the following provisions:

- Written communications pursuant to Rule 425 under the Securities Act (17 CFR 230.425)
- Soliciting material pursuant to Rule 14a-12 under the Exchange Act (17 CFR 240.14a-12)
- Pre-commencement communications pursuant to Rule 14d-2(b) under the Exchange Act (17 CFR 240.14d-2(b))
- Pre-commencement communications pursuant to Rule 13e-4(c) under the Exchange Act (17 CFR 240.13e-4(c))

Securities registered pursuant to Section 12(b) of the Act:

(Title of class)	(Trading Symbol)	(Name of exchange on which registered)
Common Stock, no par value	POR	New York Stock Exchange

Indicate by check mark whether the registrant is an emerging growth company as defined in Rule 405 of the Securities Act of 1933 or Rule 12b-2 of the Securities Exchange Act of 1934.

Emerging growth company

If an emerging growth company, indicate by check mark if the registrant has elected not to use the extended transition period for complying with any new or revised financial accounting standards provided pursuant to Section 13(a) of the Exchange Act. []

Item 7.01 Regulation FD Disclosure.

Portland General Electric Company is furnishing a copy of the investor presentation that management intends to use beginning on May 12, 2026. The investor presentation will be accessible at Portland General Electric Company's website at <https://investors.portlandgeneral.com> and is also included herewith as Exhibit 99.1.

Item 9.01 Financial Statements and Exhibits.

(d) Exhibits.

99.1	Portland General Electric Company Investor Presentation dated May 12, 2026.
104	Cover Page Interactive Data File (embedded within the Inline XBRL document).

SIGNATURE

Pursuant to the requirements of the Securities Exchange Act of 1934, the registrant has duly caused this report to be signed on its behalf by the undersigned thereunto duly authorized.

PORTLAND GENERAL ELECTRIC COMPANY

(Registrant)

Date: May 12, 2026

By: /s/ Joseph R. Trpik

Joseph R. Trpik
*Senior Vice President, Finance
and Chief Financial Officer*

Investor Presentation

PORTLAND GENERAL ELECTRIC

May 12, 2026



Cautionary statement

Portland General Electric
investors.portlandgeneral.com
121 SW Salmon Street
Suite 1WTC0506
Portland, OR 97204

Erin Schwartz
(503) 464-7751
Erin.schwartz@pgn.com

Shiraz Bengali
(503) 464-7314
Shiraz.Bengali@pgn.com



Information Current as of May 12, 2026

Except as expressly noted, the information in this presentation is current as of May 12, 2026 - and should not be relied upon as being current as of any subsequent date. PGE undertakes no duty to update this presentation, except as may be required by law.

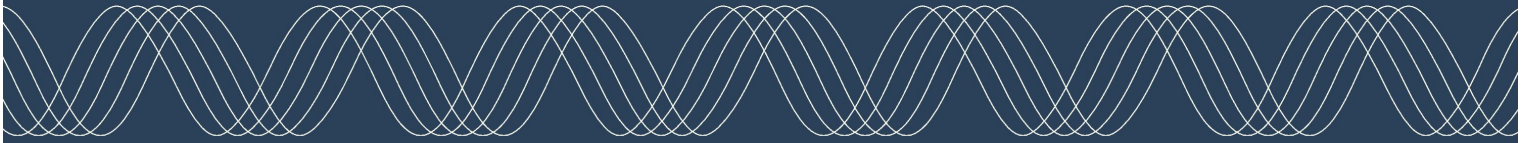
Forward-Looking Statement

Statements in this presentation that relate to future plans, objectives, expectations, performance, events and the like may constitute "forward-looking statements" within the meaning of the Private Securities Litigation Reform Act of 1995, Section 27A of the Securities Act of 1933, as amended, and Section 21E of the Securities Exchange Act of 1934, as amended. Investors should not rely unduly on any forward-looking statements.

Forward-looking statements include statements, other than statements of historical or current fact, regarding PGE's earnings guidance (including all the assumptions and expectations upon which such guidance is based), PGE's proposed purchase of electric utility operations and certain assets in Washington state from PacifiCorp (Acquisition), and PGE's operating and financing plans, as well as other statements containing words such as "accretive," "anticipates," "assumptions," "believes," "continue," "could," "estimates," "expects," "expected," "forecast," "guidance," "illustrative," "intends," "may," "opportunities," "outlook," "pipeline," "plans," "proposed," "seeks," "should," "target," "will," or similar expressions.

Forward-looking statements are inherently subject to risks and uncertainties, some of which cannot be predicted or quantified, which could cause future events and actual results to differ materially from those set forth in, contemplated by, or underlying the forward-looking statements. Such risks, uncertainties and other factors include, without limitation: wildfire and public safety risks, including ignitions caused by PGE assets, the effectiveness of wildfire mitigation, vegetation management, and system hardening, the ability to implement public safety power shutoffs (PSPS), related liability exposure, and the timing and extent of regulatory cost recovery; severe weather, climate, and catastrophe risks, including extreme or unseasonable weather and other natural or human caused disasters that could endanger public safety, disrupt operations, damage assets, limit access to power or fuel supplies, increase costs, or adversely affect cost recovery; electric system operational risks, including forced outages, fires, equipment failures, adverse hydro or wind conditions, fuel supply disruptions, and complications at jointly owned facilities, resulting in increased costs or the need to procure replacement power; power and fuel supply and price risks, including availability, counterparty nonperformance, and volatility in wholesale electricity, natural gas, coal, and other fuel markets; regulatory, legislative, and policy risks, including new or revised laws, regulations, executive actions, audits, investigations, and proceedings that could affect rates, cost recovery, operations, capital plans, or financial results; Acquisition risks, including risks related to regulatory approvals, financing and joint-venture arrangements, integration and operational execution, cost recovery, and the possibility that the anticipated benefits of the Acquisition are delayed, not realized, or cost more than expected; environmental compliance and permitting risks, including evolving environmental laws and permitting requirements and site specific remediation obligations, such as Superfund liabilities, where uncertainties regarding remediation scope, cost allocation, litigation, and regulatory cost recovery could result in material costs or adversely affect PGE's financial position, results of operations, or cash flows; capital investment and execution risks, including supply chain disruptions, cost inflation, labor constraints, permitting delays, contractual disputes, counterparty failures, or project abandonment, which could impair timely completion or cost recovery; load growth and demand uncertainty, including accelerated or uneven growth from large customers such as data centers, changes in customer usage patterns requiring substantial capital investment, variability in demand driven by weather variations, and reduced consumption or load shifting resulting from energy efficiency measures or other changes in customer behavior; customer choice and market structure risks, including reduced demand or usage shifts due to distributed generation or increased procurement from alternative providers, such as registered Electricity Service Suppliers (ESSs) or community choice aggregation programs; cybersecurity and physical security risks, including cyberattacks, data breaches, physical attacks, or other malicious acts that could damage assets, disrupt systems, or result in the disclosure of sensitive information; geopolitical and macroeconomic risks, including acts of war, terrorism, or civil unrest—such as the war involving the United States and Iran—that could disrupt energy markets or supply chains, increase costs, or contribute to volatility in capital markets, inflation, or interest rates; economic and financial market risks, including availability and cost of capital, interest rate and equity market volatility, inflation, and trade tariffs affecting operating or capital costs; legal and litigation risks, including the timing and outcome of judicial, administrative, or regulatory proceedings, which may result in material liabilities or costs; workforce and labor risks, including the ability to attract and retain skilled employees, transitions in senior management, and potential labor disputes or work stoppages; resource procurement and All-Source Request for Proposals (RFP) project risks, including uncertainties related to the availability, cost, permitting, financing, and performance of resources selected through RFP processes and associated regulatory and counterparty risks; insurance availability and cost, particularly for wildfire or catastrophe related coverage; accounting, tax, and policy changes, including changes in accounting standards, tax laws, or regulatory accounting policies that could affect reported results or cash flows; and the other risks and uncertainties set forth in PGE's Annual Report on Form 10-K for the year ended December 31, 2025, as filed with the SEC.

Current Topics of Focus

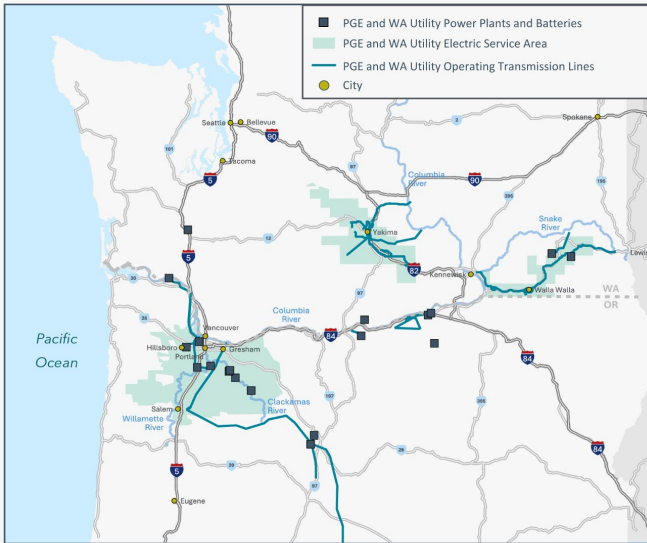


Expanding PGE's regional footprint

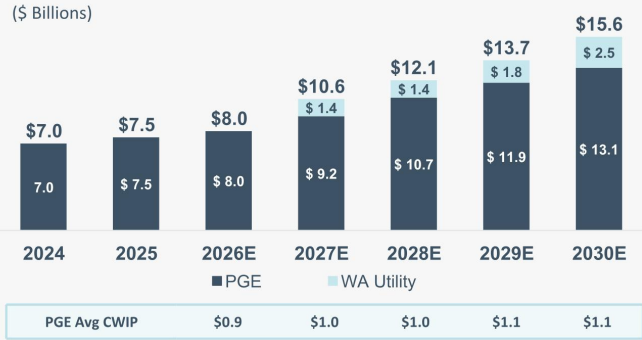


PGE's acquisition of the WA Utility will enhance scale, diversify Pacific Northwest presence and broaden future rate base investment

Service Areas and Key Assets



Illustrative Rate Base Growth⁽¹⁾



Key Company Metrics

	Customers	Tx miles	Dx Miles	Rate Base (2026E)	Employees	Generation Capacity
Total	1.1million	2,130	33,350	\$9bn ⁽²⁾	3,020	4.4 GW
% Increase vs PGE⁽³⁾	+15%	+22%	+14%	+18%	+5%	+22%

(1) Amounts presented are for illustrative purposes and represent potential average rate base values assuming PGE's existing capital forecast. 50% ownership of available MWs in future RFPs in OR and WA

(2) Estimated 2026 rate base reflects combination of PGE and WA Utility

(3) Comparisons calculated as of December 31, 2025

Strategic rationale



Regulated Operations with Attractive Washington Utility	<ul style="list-style-type: none">• Builds on existing operations in Washington since 2014 at the Tucannon River Wind Farm• WA utilities benefit from constructive regulation, including multi-year rate plans
Scale, Investment and Customer Growth	<ul style="list-style-type: none">• Adds scale in the Pacific Northwest with \$9 billion of combined rate base• Adds investment opportunities in system resilience, transmission and clean energy• Potential for incremental industrial and large customer growth
Benefits for Customers	<ul style="list-style-type: none">• PGE brings strong financial position and track record of operational performance• PGE is committed to investing in infrastructure, technology and service enhancements
Shareholder Value	<ul style="list-style-type: none">• Accretion expected in the first full year while enhancing PGE's long-term EPS and dividend growth• Supportive of strong, investment grade credit ratings• Partnership with Manulife Investment Management optimizes transaction financing and adds new source of capital

Executing to deliver shareholder value



Strong customer growth and clean energy demand support accretive rate base investment

Significant Demand Growth

4.7%

Total Load Growth
2024 - 2025

Robust Rate Base Pipeline

\$6B+

Rate Base Growth
2024 – 2030⁽¹⁾

Growth Supported By
Diversified Capital Investment

5% to 7%

Long-Term EPS & Dividend Growth
EPS Re-based off 2024 guidance of \$3.08



⁽¹⁾ Amounts presented are for illustrative purposes and represent potential values assuming 50% ownership of available MWs in the 2025 RFP. Excludes potential rate base in WA.

Remainder of Year Outlook: Commitment to Cost Management



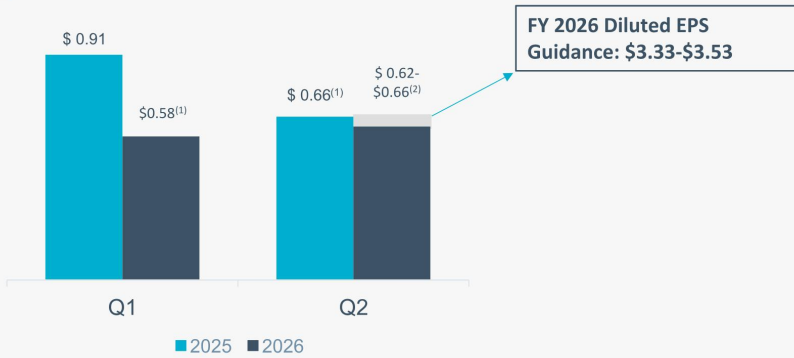
Executing Our Full-Year Plan

Q1 was 25 cents below our internal expectations, with 9 cents attributed to timing. The remaining variance is expected to be mitigated through the following actions:

- **Incremental O&M reduction** (12 cents): Pulling forward targeted 2027 savings into 2026, with benefits weighted towards the back half of the year.
- **Net Variable Power Costs** (4 cents): Generation fleet and portfolio optimization the remainder of the year.



2026 Quarterly Adjusted Diluted EPS⁽¹⁾



2026 Earnings Profile Assumptions:

- Net variable power costs are more concentrated in Q2 than prior years (driven by thermal maintenance and hydro contracts) and are expected to reverse in Q3
- Normal weather

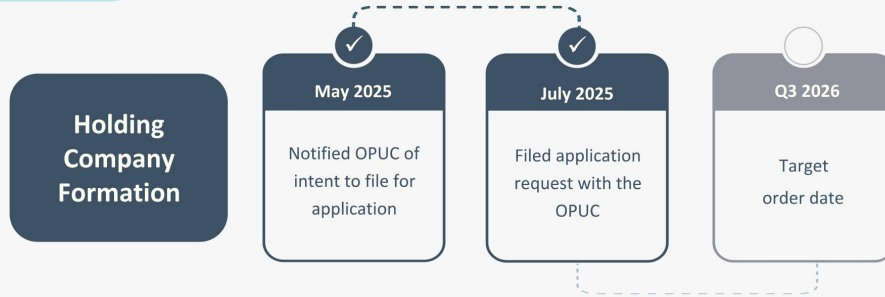
(1) See appendix for important information about non-GAAP measures, guidance, and reconciliations

(2) Forecasted values are estimates and subject to change

Advancing recovery and financing flexibility



Corporate structure update



Regulatory proceedings



Investment opportunity from RFPs

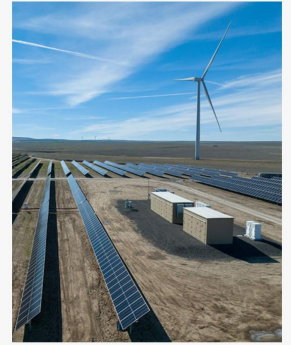
2023 RFP⁽¹⁾

Biglow Optimization

- 125 MW solar & 125 MW BESS
- Full PGE ownership
- Total investment of ~\$540 million, supported by tax credits
- Expected to be in service by the end of 2027

Wheatridge Expansion

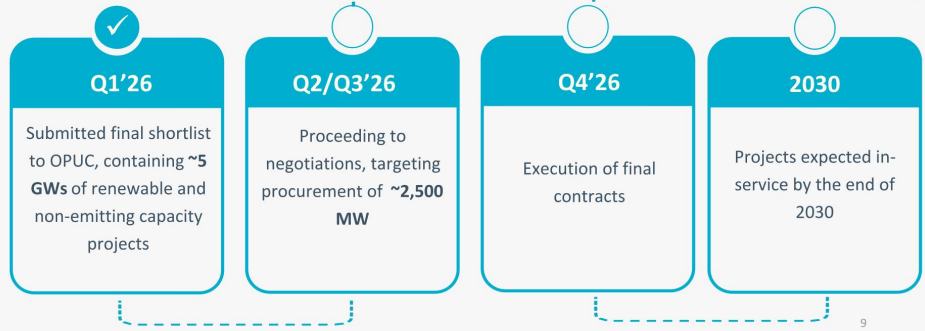
- 240 MW solar & 125 MW BESS
- Hybrid ownership – PGE owns 175 MW
- Total investment of ~\$490 million, supported by tax credits
- Expected to be in service by the end of 2027



Wheatridge

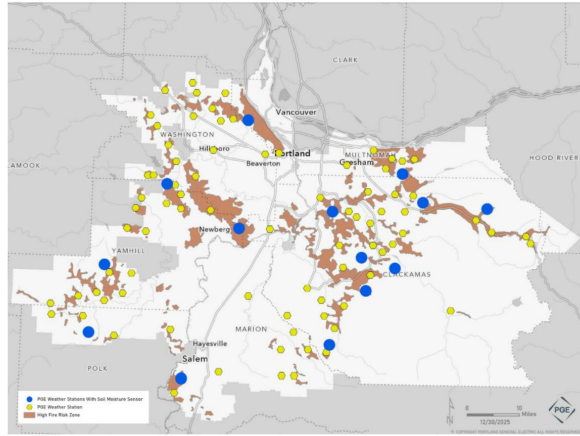
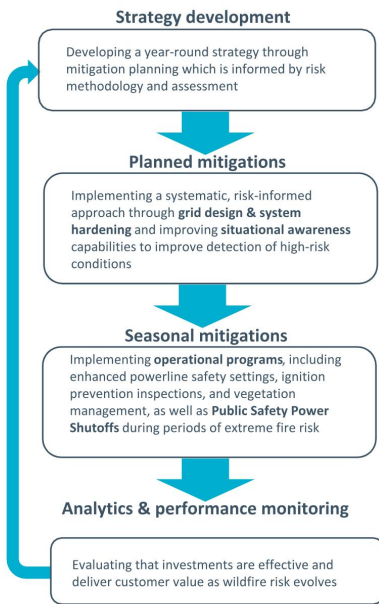
2025 RFP⁽¹⁾

- Launched to address continued resource needs
- Incorporating additional requirements for tax credit eligibility, supply chain risks, and cost implications



(1) Timelines subject to change depending on the quantity and complexity of bids received, should circumstances require, and regulatory processes

Comprehensive wildfire risk management



High fire risk zones

2.8% Percent of PGE customers within HFRZs

2 PGE has successfully implemented two Public Safety Power Shutoffs (PSPS), one in 2020 and one in 2022 to protect lives, property and public spaces

System hardening and situational awareness

\$120M Forecasted 2026 Wildfire Mitigation spend⁽¹⁾

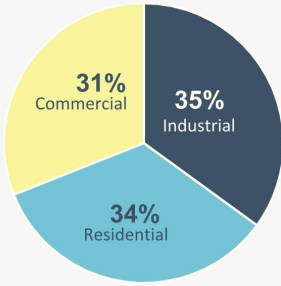
60% Percent of primary distribution lines that are undergrounded in PGE's service territory

39 Fire detection cameras across our service territory, reducing response times and risk

(1) Per PGE's 2026 Wildfire Mitigation Plan Update. Amount calculated using forecasted capital and O&M costs

Track record of diversified load growth

Total Load Mix⁽¹⁾



Historical Growth⁽¹⁾

2.9%

Total Load Growth CAGR
2020-2025

9.9%

Industrial Load Growth CAGR
2020-2025⁽²⁾

3%

Long-Term Total Load Growth Guidance
Through 2030

Industrial Load Mix⁽¹⁾

~45%

Semiconductor & High Tech

~35%

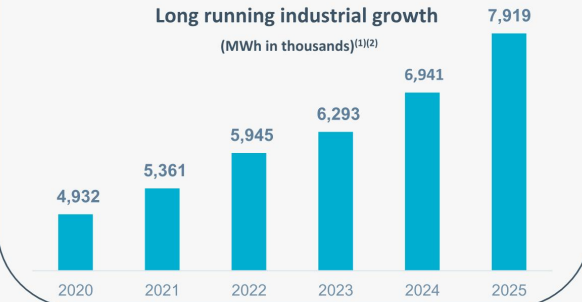
Data Centers & Artificial Intelligence

~20%

Traditional Manufacturing & Other

Long running industrial growth

(MWh in thousands)⁽¹⁾⁽²⁾



- Core metro service area
- I-5 corridor
- 'Silicon Forest' high tech cluster

Semiconductor and data centers companies with operations in PGE's service territory:

- Intel
- Lam Research
- Analog Devices
- Microchip Technologies
- Digital Realty Trust
- QTS
- Stack*
- Aligned*
- EdgeConnex*
- On Semi
- Jireh
- Siltronic
- Tektronix
- Qorvo
- Adobe
- Comcast
- Flexential*
- NTT Global*

(1) As of December 31, 2025

(2) Includes energy deliveries to commercial and industrial customers that purchase their energy from ESSs

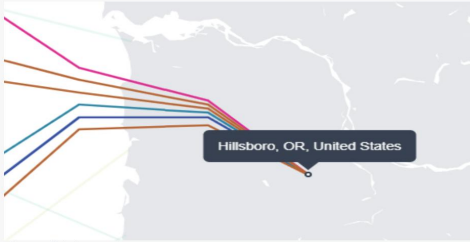
* New or incremental contracted amounts since the third quarter of 2025

Capturing high-tech and data center demand



Firm growth driven by diverse technology customers

Pacific subsea cables land in Oregon, supporting data center expansion



Source: TeleGeography

Data Center Size and Types in PGE's Area

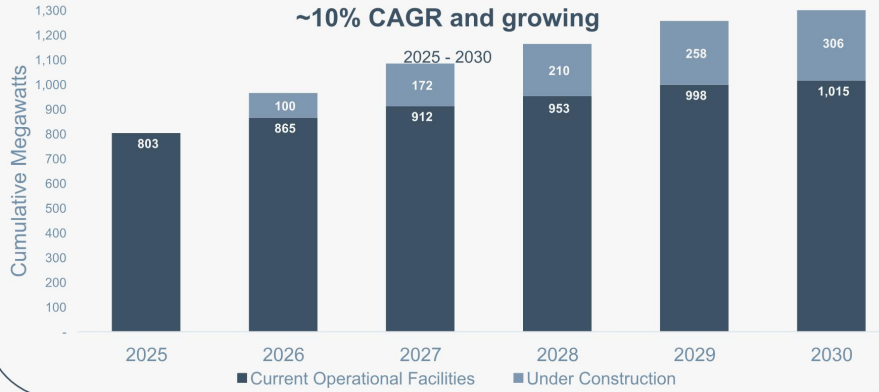
~130 MW average capacity providing AI, Enterprise Computing, and Cloud services

430 MW

2025 & 2026 YTD executed contracts with five data center customers

PGE also has **1.7 GW** of additional incremental large load requests through 2028 and 2032

Large Load Pipeline⁽¹⁾ ~10% CAGR and growing



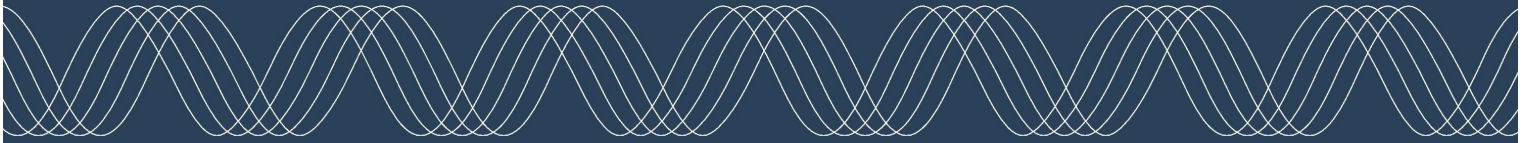
Oregon's data center legislation

PGE secured regulatory approval (OPUC docket **UM 2377**) to establish a new data center customer class, provide contracting flexibility and **support residential and small business customer affordability**. The Commission Order approved key parts of PGE's proposed framework.

The approved new large load tariff creates regulatory clarity and enables margin expansion from PGE's highest growth customer class

(1) Values represent customer capacity. As of January 31, 2026

The Company



PGE, Oregon's largest utility



Quick facts

- **Single state service territory, vertically integrated** energy company that generates, transmits and distributes electricity
- Approximately **960,000** retail customers within a service area comprised of approximately **2 million** residents⁽¹⁾
- Roughly **two-thirds** of Oregon's commercial and industrial activity occurs in PGE service area, driving robust demand growth
- Investing in **clean energy** and transmission to support customers, make progress towards decarbonization targets and enhance our systems' reliability
- **3,500+** MWs of owned generation
- **300 MWs** of owned energy storage capacity

Financial snapshot

- 2025 revenue: \$3.5 billion⁽¹⁾
- 2025 diluted earnings per share: \$2.77 GAAP, \$3.05 adjusted non-GAAP⁽²⁾
- Net utility plant assets: \$10.6 billion⁽¹⁾



(1) As of December 31, 2025.

(2) See appendix for important information about non-GAAP measures, guidance, and reconciliations

Investing in a reliable and clean energy future

- **2,500 to 3,500 MW** of additional non-emitting resources remain to be procured through multi-stage procurement processes through 2030
- Making continuous progress on **decarbonization** while maintaining affordability and reliability for customers

Execution, operational effectiveness and efficiency

- **5% to 7%** long-term EPS growth⁽¹⁾ and dividend growth guidance⁽²⁾
- Continuing to implement efficiencies and manage costs to keep customer prices **as low as possible** while serving safe and reliable power
- Investing in our system to maintain and **increase resiliency** to mitigate against extreme weather and wildfires

High-growth service area

- Largely **urban service territory** that is experiencing sustained growth in **semiconductor and data center** demand
- Forecasting **3%** long-term load growth, through 2030
- Forecasting **10%** long-term load growth from data center and high-tech customers (2025 – 2030)

Regulatory framework

- **Supportive regulatory mechanisms** including a Renewable Adjustment Clause, Wildfire Mitigation Automatic Adjustment Clause, and major storm damage recovery
- Governor-**appointed 3-member public utility commission** with staggered 4-year terms
- **Forward test year**

Prioritizing customer service and experience

- **No. 1 ranked renewable power program** in the United States for 16 years⁽³⁾
- **Ranked as a Top 10 Utility** for in the United States for **Customer Experience** according to Forrester's The US Customer Experience Index⁽⁴⁾

(1) Long-term EPS growth using base equal to the midpoint of original 2024 adjusted earnings guidance of \$3.08 per share. EPS estimates and projections are based on assumptions and there can be no assurance regarding the amount of future earnings consistent with earnings guidance.

(2) The amount and timing of dividends payable and the dividend policy are at the sole discretion of the Portland General Electric Board of Directors and, if declared and paid, dividends may be in amounts that are materially less than projected.

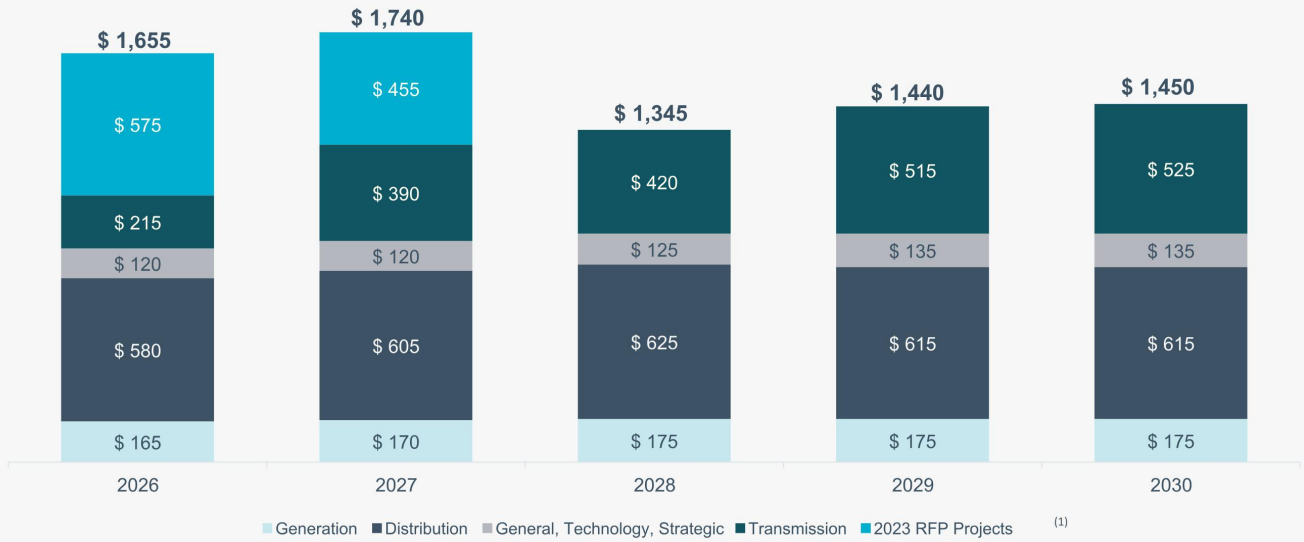
(3) National Renewables Energy Laboratory. NREL did not release rankings in 2011.

(4) Forrester's The US Utilities Customer Experience Index Rankings, 2021-2025.

Reliability and resiliency investments



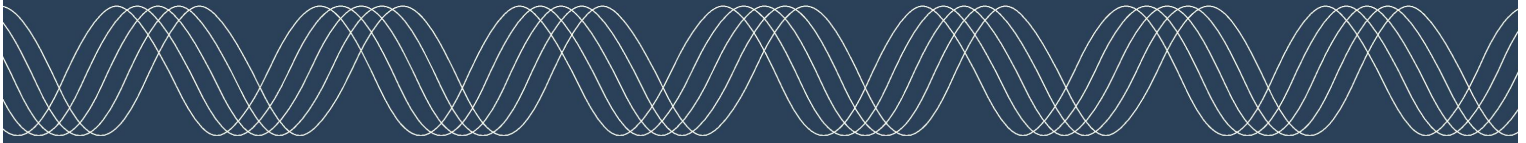
Capital expenditures forecast



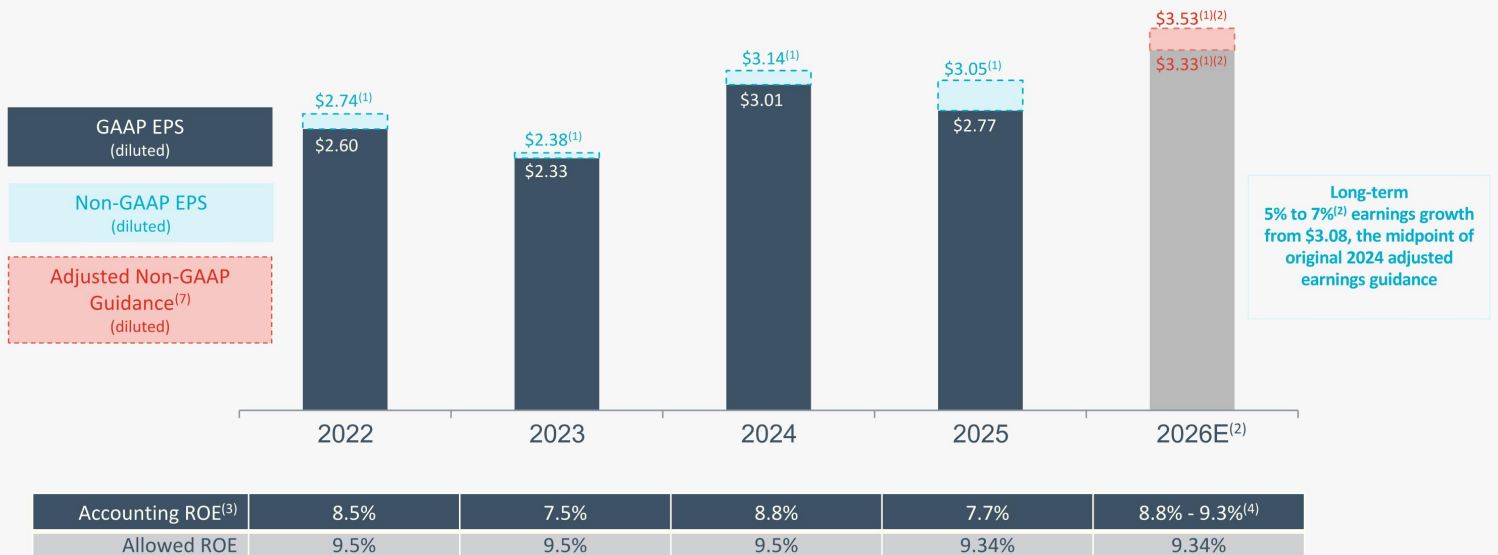
Values above do not include potential capital expenditures for the WA Utility or for future RFP cycles

Note: Dollar values in millions. Capital expenditures exclude allowance for funds used during construction. These are projections based on assumptions of future investment. Actual amounts expended will depend on various factors, including, but not limited to, siting, permitting, tariffs and supply chain constraints, and may differ materially from the amounts reflected in this capital expenditure forecast
 (1) 2023 RFP project amounts are presented gross of federal tax credits

Key Strengths



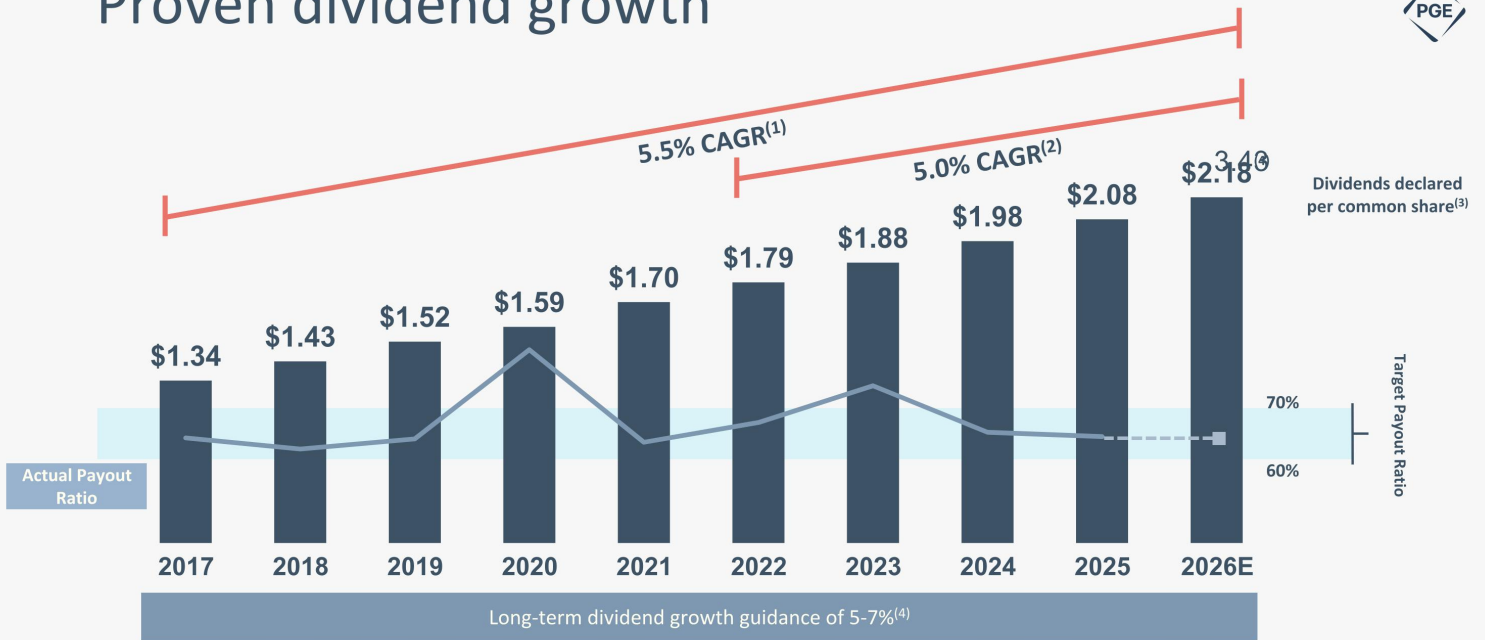
Long-term financial performance



(1) Refer to the appendix for important information about non-GAAP measures, guidance and reconciliations.
 (2) Estimates and projections are based on assumptions and there can be no assurance regarding the amount of future earnings consistent with earnings guidance and earnings growth guidance.
 (3) 2022 – 2025 return on average equity, calculated based on GAAP net income.
 (4) 2026E Accounting ROE represents return on average equity, calculated based on adjusted earnings guidance range of \$3.33 to \$3.53.



Proven dividend growth



(1) Compound Annual Growth Rate from 2017 through 2026E

(2) Compound Annual Growth Rate from 2022 through 2026E

(3) Represents annual dividends declared per common share

(4) Estimates and projections are based on assumptions and there can be no assurance regarding the amount of future dividends. The amount and timing of dividends payable and the dividend policy are the sole discretion of the Portland General Electric Board of Directors, and if declared and paid, dividend may be in amounts that are less than projected

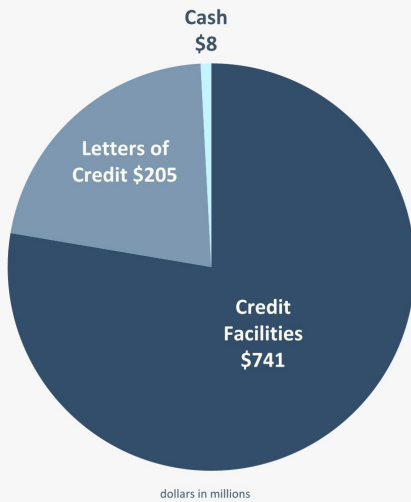
(5) 2026E estimated dividends declared based on annualization of quarterly dividend declared in April 2025. 2026E dividend payout ratio is calculated using the midpoint of adjusted earnings guidance of \$3.33 to \$3.53

Liquidity and financing

Stable, investment grade credit ratings and strong cash flow metrics

Total Liquidity: \$954 million

as of March 31, 2026



dollars in millions

(1) Metrics are estimated as of 3/31/2026

Ratings	S&P	Moody's		
Senior Unsecured	BBB+	A3		
Outlook	Stable	Stable		
2026 Credit Metric Estimate ⁽¹⁾	19.4% FFO	19.7% CFO pre WC		
Expected 2026 debt financings (dollars in millions)	Q1	Q2	Q3	Q4
Long-term debt	\$350			
Estimated equity financings	2026		2027	
Base equity	~\$300 million ✓		~\$50 million	
2023 RFP equity	~\$250 million ✓		~\$100 million	
Equity for future RFP ownership	Financed in line with 50/50 capital structure, net of tax credit monetization			

Equity Forward Sale Agreement

- ✓ Executed \$550 million equity forward sale agreement in February 2026 to address 2026 base and 2023 RFP equity needs

ATM Program

- Entered into a \$500 million ATM facility in February 2026 to further support base and RFP ownership equity needs

Estimated financing above does not include potential impacts of proposed corporate structure updates or financing for the WA Utility

Clean energy and transmission investment



Building a smarter, stronger, more flexible grid to deliver the power customers need today and into the future

Advancing the clean energy transition

Renewable Projects

New resources that provide emissions-free energy for PGE customers

- **Clearwater Wind Facility**
 - 311 MW of wind generation, located in Eastern Montana
- **Constable Battery Energy Storage System**
 - 75 MW of non-emitting capacity, located in Hillsboro, Oregon
- **Seaside Battery Energy Storage System**
 - 200 MW of non-emitting capacity, located in Portland, Oregon



Upgrading infrastructure to enable growth

Transmission Projects

Multi-phase projects that support customers and improve reliability for the region

- **Tonquin Project**
 - 115kV transmission lines and substation upgrade
- **Hillsboro Reliability Project**
 - 230kV transmission lines and substation upgrade
- Additional substation upgrades throughout the service territory to enable load growth, led by high-tech and digital customers

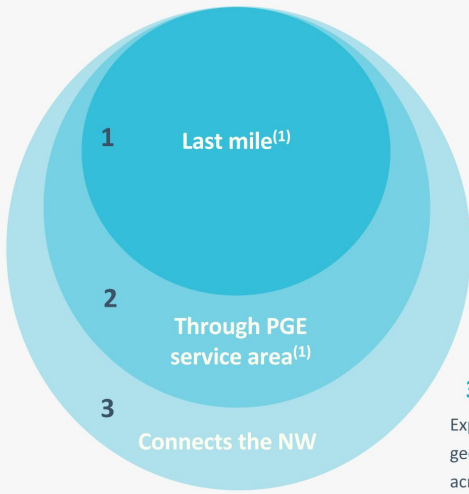


Transmission investments



Transmission is critical in improving the network, alleviating congestion, and providing access to diverse resources

PGE is focused on investments within **three key areas**:



1) PGE's System

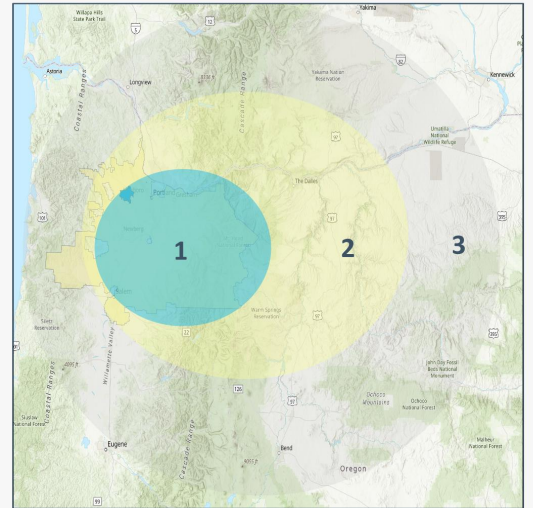
Essential for last-mile transmission to serve load from assets, on and off our system

2) Pacific Northwest

Areas that are adjacent to PGE's service territory. Prioritizing incremental capacity to bring power from our region into PGE's territory

3) Regional, Interregional Projects

Expand access to least cost intermittent resources, creating geographic diversity to integrate a variety of resource types across regions



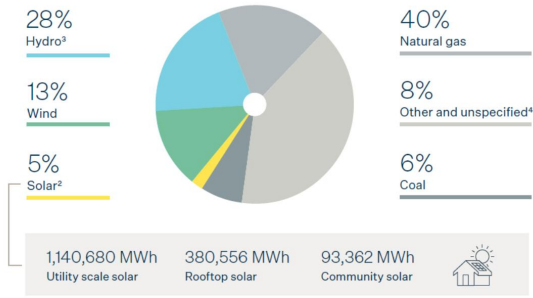
(1) Last Mile and Through PGE service area projects are focused on existing lines, easements, and rights-of-ways

2025 Resources and Emissions at a Glance

Renewables in PGE's total system have grown by 37% since 2021

Resource mix for PGE's total system¹

Retail and wholesale



Percentage of resource mix from non-emitting resources

46% non-emitting
for PGE's total system

Battery storage

531 MW
of batteries added to our system

More energy, fewer emissions per MWh

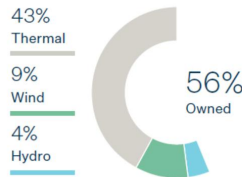
0.27 metric tons of CO₂e per MWh is the GHG intensity for PGE's power supply

PGE leads its peer utilities, **ranking #1** for lowest carbon intensity.¹

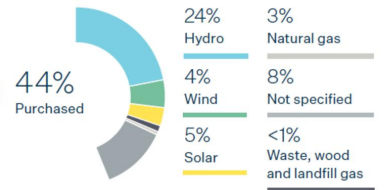
1. Based on the utility/proxy peers reported in the National Public Utilities Council Fall 2025 Annual Decarbonization Report.

PGE owned vs. purchased power

Owned Power Types



Purchased Power Types



1. Percentages above represent 2025 resource mix from PGE's total system load, inclusive of wholesale and retail volumes. The percentage of 2025 retail loads as defined by Oregon Department of Environment Quality (ODEQ), which excludes wholesale sales, served by non-emitting resources is 40%. This resource mix does not include battery storage. Refer to the appendix for additional information.
 2. Rooftop solar and community solar are based on gross generation, which is total energy generated before any on-site customer usage.
 3. Hydro amounts include purchases from Bonneville Power Administration and Tacoma Power, which may have an immaterial amount of emissions associated with them, per ODEQ rules.
 4. Unspecified is purchased power for which a specific generating resource is not defined and could be any of the generation types (e.g., wind, hydro, gas).

All 2025 emissions data is preliminary and subject to change as internal review procedures are performed. Certain emissions information is subject to review and approval by ODEQ and Environmental Protection Agency.

Operational excellence



Continued focus on safety and a leader in reliability



Lost Time Incident Rate

0.17
2024: 0.26



**System Average
Interruption Duration
Index (SAIDI)⁽¹⁾**

1st Quartile
2024: 2nd Quartile



**Overall Generation
Availability**

85.9%
2024: 85.9%

Note: All data is as of December 31, 2025, unless otherwise noted

(1) Excluding major event days. Benchmarked against the 2024 Institute of Electrical and Electronics Engineers (IEEE) Reliability survey

CUSTOMER SATISFACTION

TOP
10

Ranked as a **Top 10** Utility in the United States for Customer Experience according to Forrester's The US Customer Experience Index⁽¹⁾

PGE PROGRAMS

#1

Continued position as **number 1** ranked renewable power program in the United States for 16 years according to the National Renewable Energy Laboratory (2024)⁽²⁾



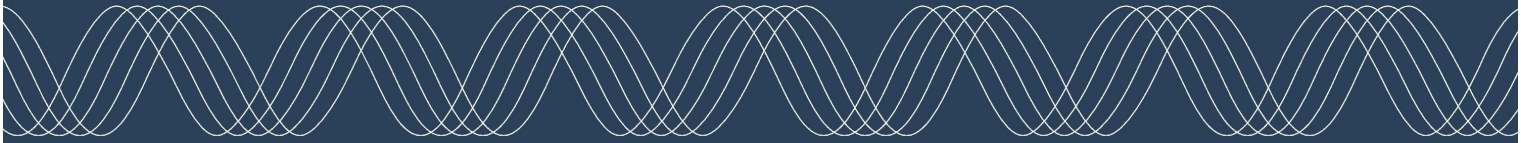
Enrolled **nearly 105,000**⁽³⁾ households in our Income-Qualified Bill Discount Program

(1) Forrester's The US Utilities Customer Experience Index Rankings, 2021-2025

(2) NREL did not release rankings in 2011. Ranking is based on participation of business and residential renewable energy customers in a renewables program

(3) Amount enrolled as of December 31, 2025

Appendix

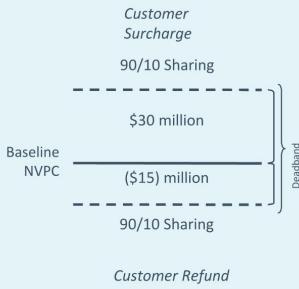


Recovery of power costs

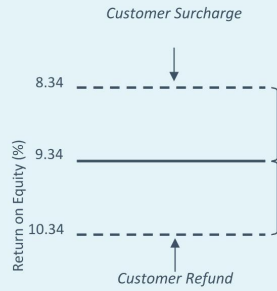


Annual power cost update tariff resets prices based on forecast of net variable power costs (NVPC) for the coming year

1. Power Cost Sharing



2. Earnings Test



- PGE absorbs 100% of the power costs/benefits within the deadband range
- Amounts outside the deadband are shared 90% with customers and 10% with PGE, subject to an earnings test applied using the regulated ROE as a threshold
- Customer surcharge occurs if PGE's actual regulated ROE is below 8.34% (ROE will not exceed 8.34% with surcharge)
- Customer refund occurs if PGE's actual regulated return is above 10.34% (regulated return will not decrease below 10.34% with refund)

Detriment / (Benefit) PCAM Baseline at Year End ⁽¹⁾ :										
	2016	2017	2018	2019	2020	2021	2022	2023	2024	2025
Over / (Under)	(\$10)	\$15	(\$3)	\$5	(\$13)	\$30 ⁽²⁾	\$23	\$5	(\$78)	(\$6)

(1) Dollar values in millions
 (2) Represents variance to baseline net of 90% of the excess variance to be collected from customers

2026 Earnings Sensitivities



	Sensitivity	Full-Year Adjusted EPS Impact
Load Growth - Residential ⁽¹⁾	± 1%	± \$0.07
Load Growth – Commercial ⁽¹⁾	± 1%	± \$0.03
Load Growth – Industrial ⁽¹⁾	± 1%	± \$0.01
O&M Expense	± \$10 million	± \$0.06
Interest Rates ⁽²⁾	± 25 bps	± \$0.02
Effective Tax Rate	± 1%	± \$0.04

(1) Assumes incremental load is charged at average retail rate per customer class and served at average Annual Update Tariff (AUT) power cost rate
(2) Assumes interest rate impact for full year expected debt financings in 2026

Non-GAAP financial measures

This presentation contains certain non-GAAP measures, such as adjusted earnings, adjusted EPS and adjusted earnings guidance. These non-GAAP financial measures exclude significant items that are generally not related to our ongoing business activities, are infrequent in nature, or both. PGE believes that excluding the effects of these items provides an alternative measure of the Company's comparative earnings per share and enables investors to evaluate the Company's operating financial performance trends, exclusive of items that are not normally associated with ongoing operations. Management utilizes non-GAAP measures to assess the Company's current and forecasted performance, and for communications with shareholders, analysts and investors. Non-GAAP financial measures are supplementary information that should be considered in addition to, but not as a substitute for, the information prepared in accordance with GAAP.

Items in the periods presented, which PGE believes impact the comparability of comparative earnings and do not represent ongoing operating financial performance, include the following:

- 2022: Non-cash Wildfire and COVID deferral reversal charge associated with the year ended 2020, resulting from the OPUC's 2022 GRC Final Order earnings test
- 2023: Boardman revenue requirement settlement charge associated with the year ended 2020, resulting from the OPUC's 2022 GRC Final Order
- 2024: Non-deferrable Reliability Contingency Event (RCE) costs resulting from the January 2024 winter storm
- 2025: Business transformation and optimization expenses, including strategic advisory, workforce realignment and corporate structure update costs
- 2026: Business transformation and optimization expenses, including strategic advisory, workforce realignment and corporate structure update costs; acquisition costs, including legal, financing and strategic advisory costs; Non-cash charge related to final orders on the January 2024 storm and damage and 2024 Reliability Contingency Event regulatory deferrals

Due to the forward-looking nature of PGE's non-GAAP adjusted earnings guidance, and the inherently unpredictable nature of items and events which could lead to the recognition of non-GAAP adjustments (such as, but not limited to, regulatory disallowances or extreme weather events), management is unable to estimate the occurrence or value of specific items requiring adjustment for future periods, which could potentially impact the Company's GAAP earnings. Therefore, management cannot provide a reconciliation of non-GAAP adjusted earnings per share guidance to the most comparable GAAP financial measure without unreasonable effort. For the same reasons, management is unable to address the probable significance of unavailable information.

PGE's reconciliation of non-GAAP earnings for the years ended December 31, 2022, December 31, 2023, December 31, 2024 and December 31, 2025 are on the following slide.

Non-GAAP financial measures



Non-GAAP Earnings Reconciliation for the year ended December 31, 2022		
(Dollars in millions, except EPS)	Net Income	Diluted EPS
GAAP as reported for the year ended December 31, 2022	\$233	\$2.60
Exclusion of 2020 Wildfire and COVID deferral reversal	17	0.19
Tax effect ⁽¹⁾	(5)	(0.05)
Non-GAAP as reported for the year ended December 31, 2022	\$245	\$2.74

Non-GAAP Earnings Reconciliation for the year ended December 31, 2023		
(Dollars in millions, except EPS)	Net Income	Diluted EPS
GAAP as reported for the year ended December 31, 2023	\$228	\$2.33
Exclusion of Boardman revenue requirement settlement charge	7	0.07
Tax effect ⁽¹⁾	(2)	(0.02)
Non-GAAP as reported for the year ended December 31, 2023	\$233	\$2.38

Non-GAAP Earnings Reconciliation for the year ended December 31, 2024		
(Dollars in millions, except EPS)	Net Income	Diluted EPS
GAAP as reported for the year ended December 31, 2024	\$313	\$3.01
Exclusion of January 2024 storm costs	19	0.18
Tax effect ⁽¹⁾	(5)	(0.05)
Non-GAAP as reported for the year ended December 31, 2024	\$327	\$3.14

(1) Tax effects were determined based on the Company's full-year blended federal and state statutory tax rate

Non-GAAP Earnings Reconciliation for the three months ended June 30, 2025		
(Dollars in millions, except EPS)	Net Income	Diluted EPS
GAAP as reported for the three months ended June 30, 2025	\$62	\$0.56
Exclusion of business transformation and optimization expenses	15	0.14
Tax effect ⁽¹⁾	(4)	(0.04)
Non-GAAP as reported for the three months ended June 30, 2025	\$73	\$0.66

Non-GAAP Earnings Reconciliation for the year ended December 31, 2025		
(Dollars in millions, except EPS)	Net Income	Diluted EPS
GAAP as reported for the year ended December 31, 2025	\$306	\$2.77
Exclusion of business transformation and optimization expenses	42	0.38
Tax effect ⁽¹⁾	(12)	(0.10)
Non-GAAP as reported for the year ended December 31, 2025	\$336	\$3.05

Non-GAAP Earnings Reconciliation for the three months ended March 31, 2026		
(Dollars in millions, except EPS)	Net Income	Diluted EPS
GAAP as reported for the three months ended March 31, 2026	\$45	\$0.38
Exclusion of regulatory deferral adjustment charge related to 2024	15	0.13
Exclusion of business transformation and optimization expenses	17	0.15
Tax effect ⁽¹⁾	(9)	(0.08)
Non-GAAP as reported for the three months ended March 31, 2026	\$68	\$0.58